



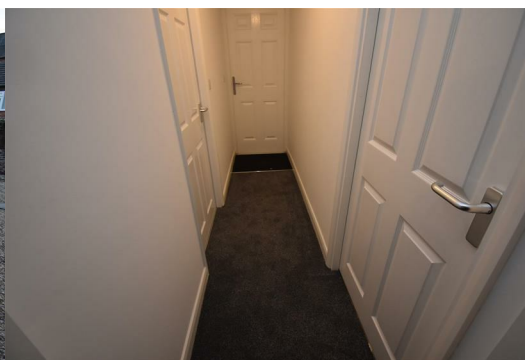
73 Ellesmere Street

, Leigh, WN7 4LQ

**£695 Per Month**



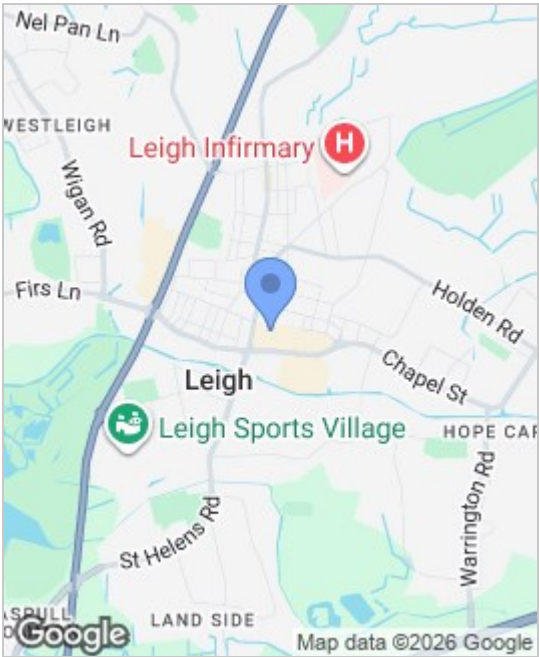
1 bedroom detached bungalow in small select gated development of 4 apartments and 1 detached bungalow which is just a short walk from Leigh town centre and all of its amenities including transport links and the bus station. The property would be ideal for professional or couple providing high quality accommodation in the heart of the town centre which is also ideal for those who commute to other cities for work and therefore need the accessible transport links which the town centre provides. The property comprises of entrance / hallway, generous lounge / kitchen / dining area, large double bedroom and bathroom with 3 piece shower suite. The property is brand new throughout and incorporates UPVC Double Glazing throughout as well as modern and tasteful décor. Externally there is a communal garden area to the front / side and there is on street permit parking and contract parking in the locality. Early viewing is a must to appreciate in full. No Pets. No Smokers.



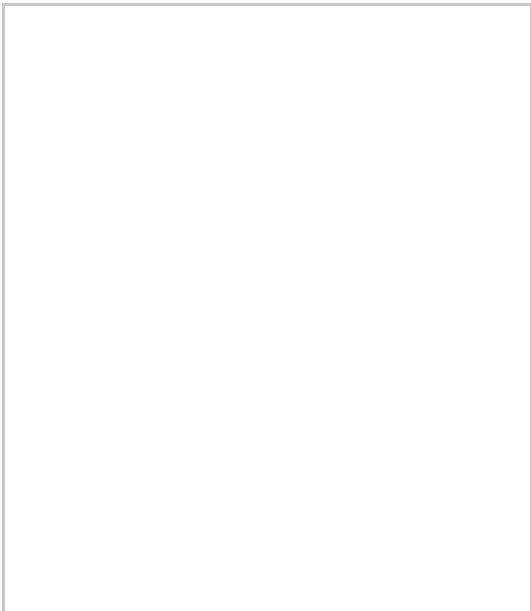
GROUND FLOOR

- Entrance / Hallway
- Lounge / Dining / Kitchen
- Bedroom
- Bathroom
- EXTERNAL
- Communal Garden Area

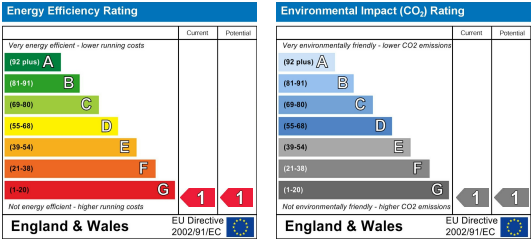
Area Map



Floor Plans



Energy Efficiency Graph



These particulars, whilst believed to be accurate are set out as a general outline only for guidance and do not constitute any part of an offer or contract. Intending purchasers should not rely on them as a representation of fact, but must satisfy themselves by inspection or otherwise as to their accuracy. No person in this firms employment has the authority to make or give any representation or warranty in relation to this property.

